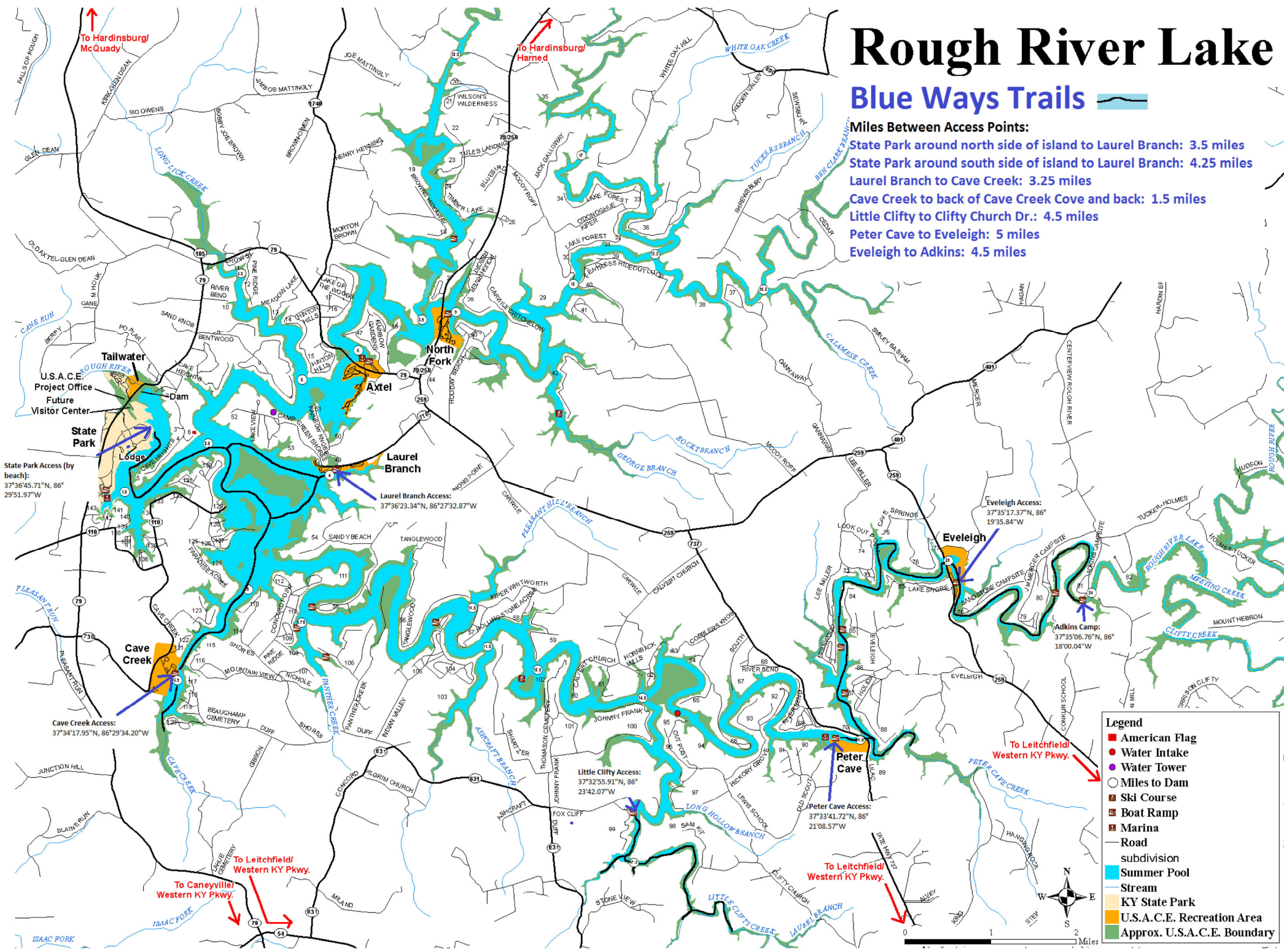


Rough River Lake

Blue Ways Trails

Miles Between Access Points:

- State Park around north side of island to Laurel Branch: 3.5 miles
- State Park around south side of island to Laurel Branch: 4.25 miles
- Laurel Branch to Cave Creek: 3.25 miles
- Cave Creek to back of Cave Creek Cove and back: 1.5 miles
- Little Clifty to Clifty Church Dr.: 4.5 miles
- Peter Cave to Eveleigh: 5 miles
- Eveleigh to Adkins: 4.5 miles



State Park Access (by beach):
 37°36'45.71"N, 86°29'51.97"W

Laurel Branch Access:
 37°36'23.34"N, 86°27'32.87"W

Cave Creek Access:
 37°34'17.95"N, 86°29'34.20"W

Little Clifty Access:
 37°32'55.91"N, 86°23'42.07"W

Peter Cave Access:
 37°33'41.72"N, 86°21'08.57"W

Eveleigh Access:
 37°35'17.37"N, 86°19'35.84"W

Adkins Camp:
 37°35'06.76"N, 86°18'00.04"W

Legend

- American Flag
- Water Intake
- Water Tower
- Miles to Dam
- Ski Course
- Boat Ramp
- Marina
- Road
- subdivision
- Summer Pool
- Stream
- KY State Park
- U.S.A.C.E. Recreation Area
- Approx. U.S.A.C.E. Boundary

